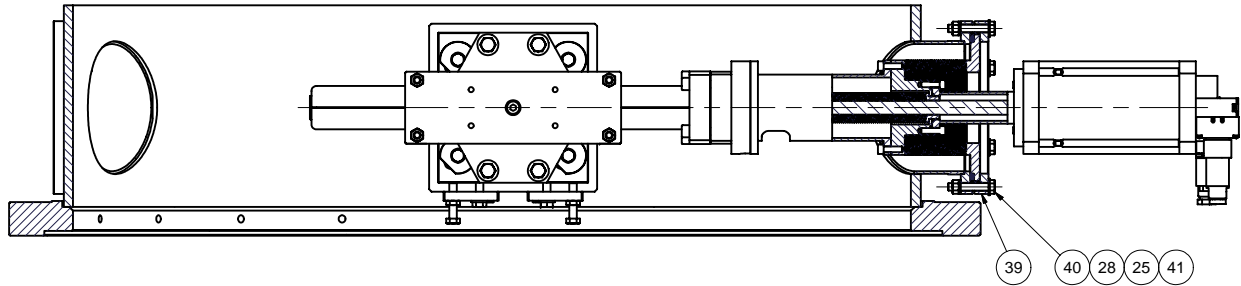
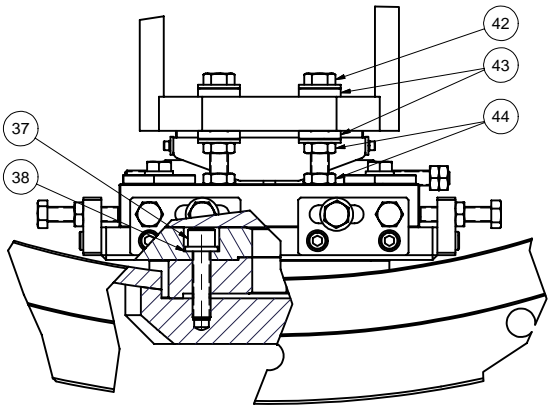


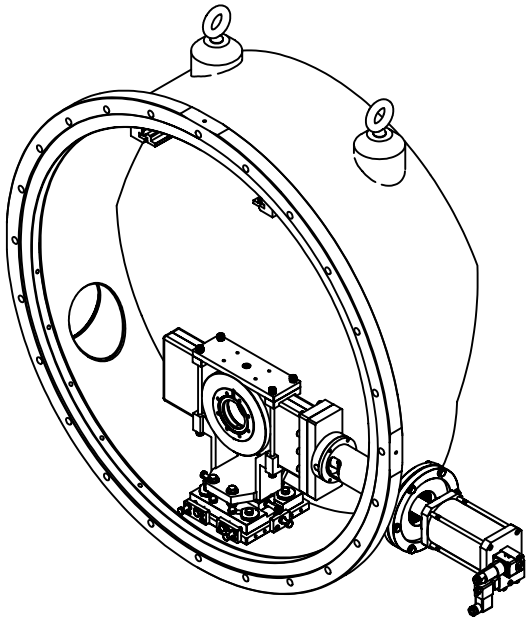
REVISIONS				
SYM.	ZONE	DESCRIPTION	DATE	APP.



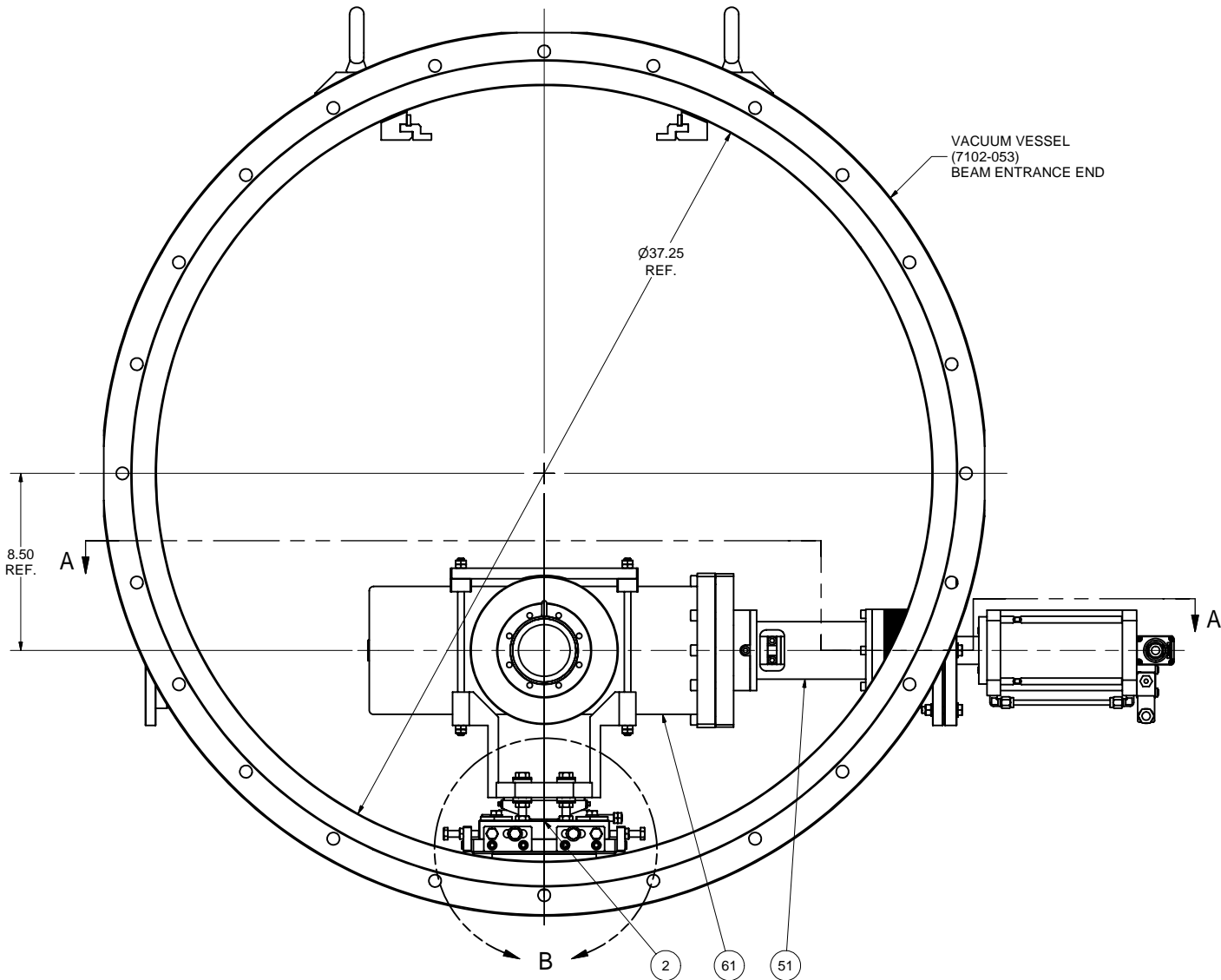
SECTION A-A



DETAIL B
SCALE 1:2



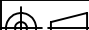

SCALE 1:7.5



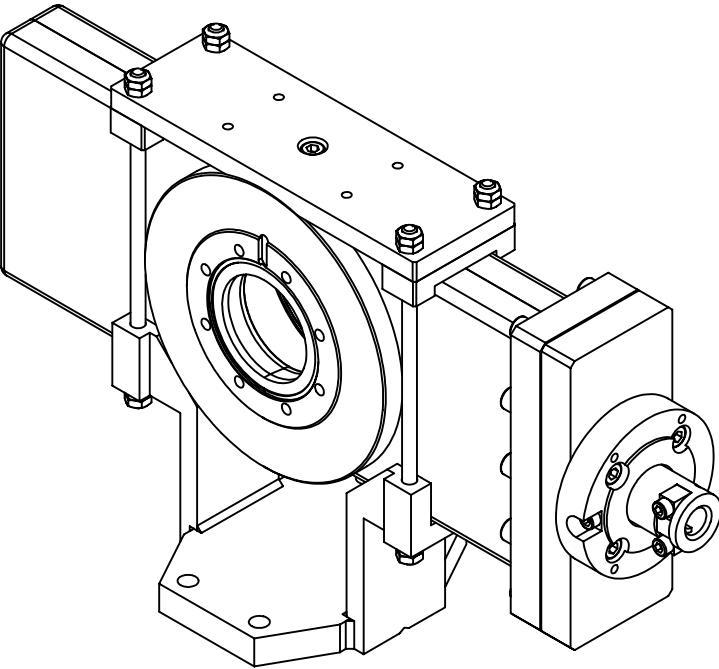
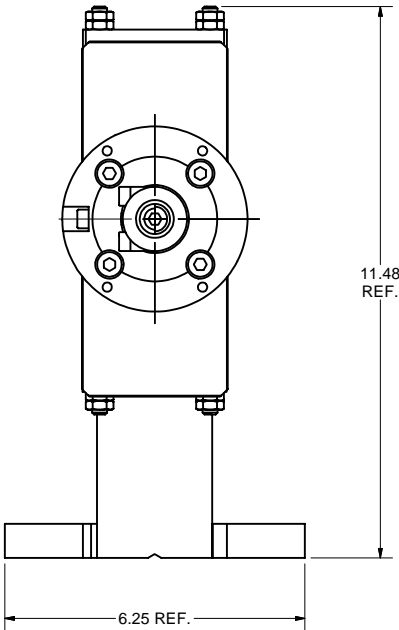
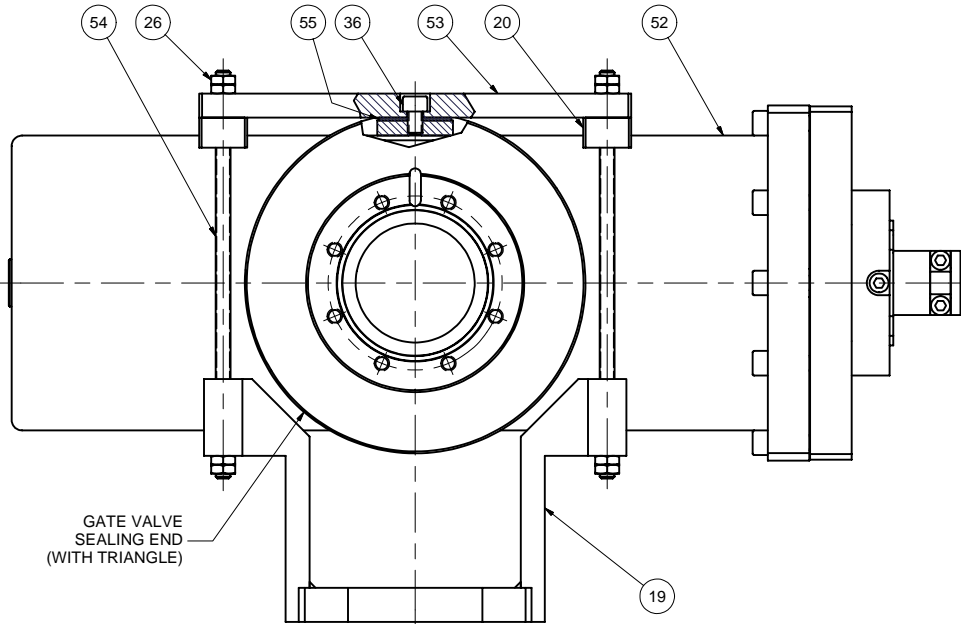
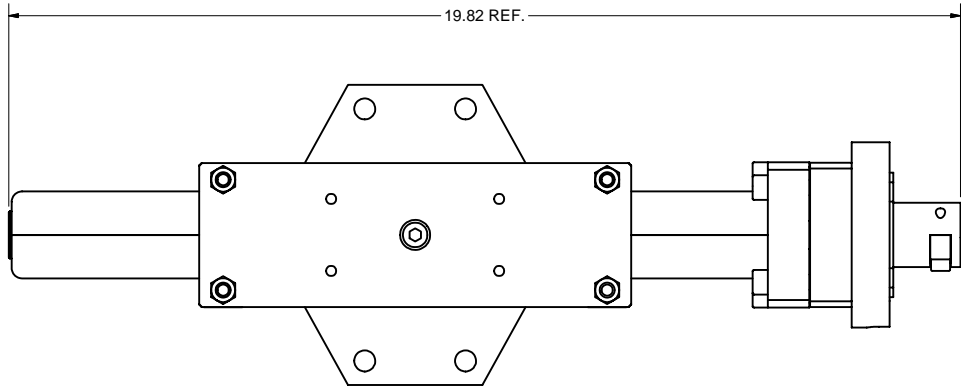
60 GATE VALVE AT BEAM ENTRANCE ASSEMBLY

FILE NAME: 7102-057
SHEET NO.: 1
DFT. SCALE: 1:4
MATERIAL:
QTY: 1 PER CRYOMODULE
NOTES:

61	7102-057 (Sh.2)	BEAM ENTRANCE GATE VALVE MAIN BODY SUB-ASM	1					
51	Purchased	ERL 63 MM RF GATE VALVE SHAFT EXTENSION	1					Part of ERL 63 mm RF Gate Valve
44	Purchased	3/8-24 Hex Jam Nut, SS	8					McMaster-Carr's 91847A431, or equiv.
43	Purchased	5/16-3/8 Self-Aligning Washer, 18-8 St.St.	8					McMaster-Carr's 91944A450, or equiv.
42	Purchased	3/8-24 x 3 Hex Head Cap Screw, SS, Dicronited	4					McMaster-Carr's 92240A362
41	Purchased	5/16-24 Hex Nut, SS	6					McMaster-Carr's 91845A115, or equiv.
40	Purchased	5/16-24 x 1-3/4 Hex Head Cap Screw, SS	6					McMaster-Carr's 92198A308, or equiv.
39	7110-008 (Sh.7)	GATE VALVE PORT ROTATABLE FLANGE	1					
38	Purchased	3/8 Spring Washer, SS	4					McMaster-Carr's 92146A031
37	Purchased	3/8-24 x 1-1/2 Socket Head Cap Screw, SS, Dicronited	4					McMaster-Carr's 92196A363
28	Purchased	5/16 Washer, SS	6					McMaster-Carr's 96659A107, or equiv.
25	Purchased	5/16 Spring Washer, SS	6					McMaster-Carr's 92146A030, or equiv.
2	7110-008 (Sh.2)	GATE VALVE SUPPORT SUB-ASM	1					
60	7102-057 (Sh.1)	GATE VALVE AT BEAM ENTRANCE ASSEMBLY	X					

		ITEM	DWG. NO.	DESCRIPTION			G1	G2	G3	REMARKS		REV.
		QUANTITY										
D	PRINT DISTR.	PLOT DATE: 9/14/2007 CAD FILE NAME: 7102-057.idw										
7102-057 SH. NO. 1 OF 2	CR-1	UNLESS OTHERWISE SPECIFIED: DIMENSIONS ARE IN INCHES: TOLERANCES ON: .0 ± .02 .00 ± .010 .000 ± .005 FRACTIONS ± 1/32 ANGLES ± 0.5° ALL SURFACES ✓		<div><div>CORNELL UNIVERSITY Floyd R. Newman Laboratory Ithaca, NY 14853</div></div> <div>ERL INJECTOR CRYOMODULE GATE VALVE AT BEAM ENTRANCE GATE VALVE AT BEAM ENTRANCE ASSEMBLY</div>								
	CHECKED BY: VM	DRAWN BY		DRAWN FOR		DATE		SCALE		D	7102-057	REV.
	APPROVED BY: VM	vm		M.Liepe		9/5/2007						
REV.		SH. NO. 1 OF 2										

REVISIONS			
SYM.	ZONE	DESCRIPTION	DATE APP.



61 BEAM ENTRANCE GATE VALVE MAIN BODY SUB-ASM
FILE NAME: 7102-057
SHEET NO.: 2
DFT. SCALE: 1:2
MATERIAL:
QTY: 1 PER CRYOMODULE
NOTES:

55	7110-008 (Sh.10)	SPACER	1					
54	7110-008 (Sh.10)	CLAMP ROD 2	4					
53	7110-008 (Sh.10)	GATE VALVE TOP PLATE	1					
52	Purchased	ERL 63 MM RF GATE VALVE, MAIN BODY	1				Part of ERL 63 mm RF Gate Valve	
36	Purchased	M8 x 12 Socket Head Cap Screw, 316 SS, Dicronited	1				McMaster-Carr's 92290A416	
26	Purchased	5/16-24 Hex Jam Nut, SS	16				McMaster-Carr's 91847A430, or equiv.	
20	7110-008 (Sh.7)	TOP CLIP	2					
19	7110-008 (Sh.6)	GATE VALVE FRAME WELDMENT	1					
61	7102-057 (Sh.2)	BEAM ENTRANCE GATE VALVE MAIN BODY SUB-ASM	X					

		ITEM	DWG. NO.	DESCRIPTION			G1	G2	G3	REMARKS		REV.
		QUANTITY										
D	PRINT DISTR.	PLOT DATE: 9/14/2007 CAD FILE NAME: 7102-057.idw										
	7102-057 SH. NO. 2 OF 2	CR-1	UNLESS OTHERWISE SPECIFIED: DIMENSIONS ARE IN INCHES; TOLERANCES ON: .0 ± .02 .00 ± .010 .000 ± .005 FRACTIONS ± 1/32 ANGLES ± 0.5° ALL SURFACES	<div>CORNELL UNIVERSITY CORNELL UNIVERSITY Floyd R. Newman Laboratory Ithaca, NY 14853</div> <div>ERL INJECTOR CRYOMODULE GATE VALVE AT BEAM ENTRANCE BEAM ENTRANCE GATE VALVE MAIN BODY SUB-ASM</div>								
CHECKED BY: VM APPROVED BY: VM				DRAWN BY vm	DRAWN FOR M.Liepe	DATE 9/5/2007	SCALE D	7102-057 SH. NO. 2 OF 2	REV.			